



MARCSON
H O M E S

CERTIFIED MASTER BUILDER

the **SHAYLA**

2133 sq. ft.

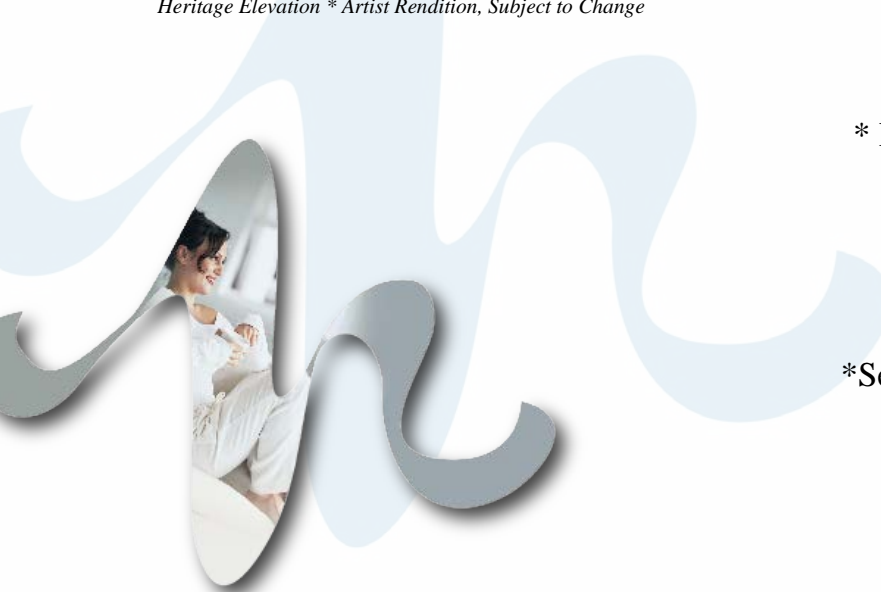


*Heritage Elevation * Artist Rendition, Subject to Change*

the **SHAYLA** features...

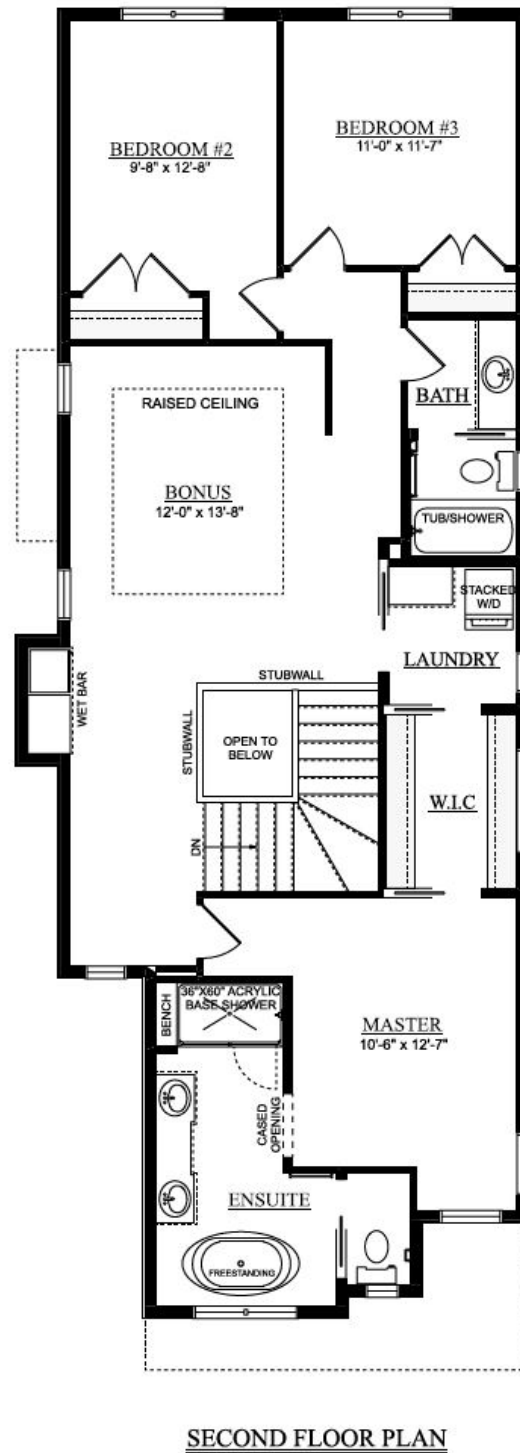
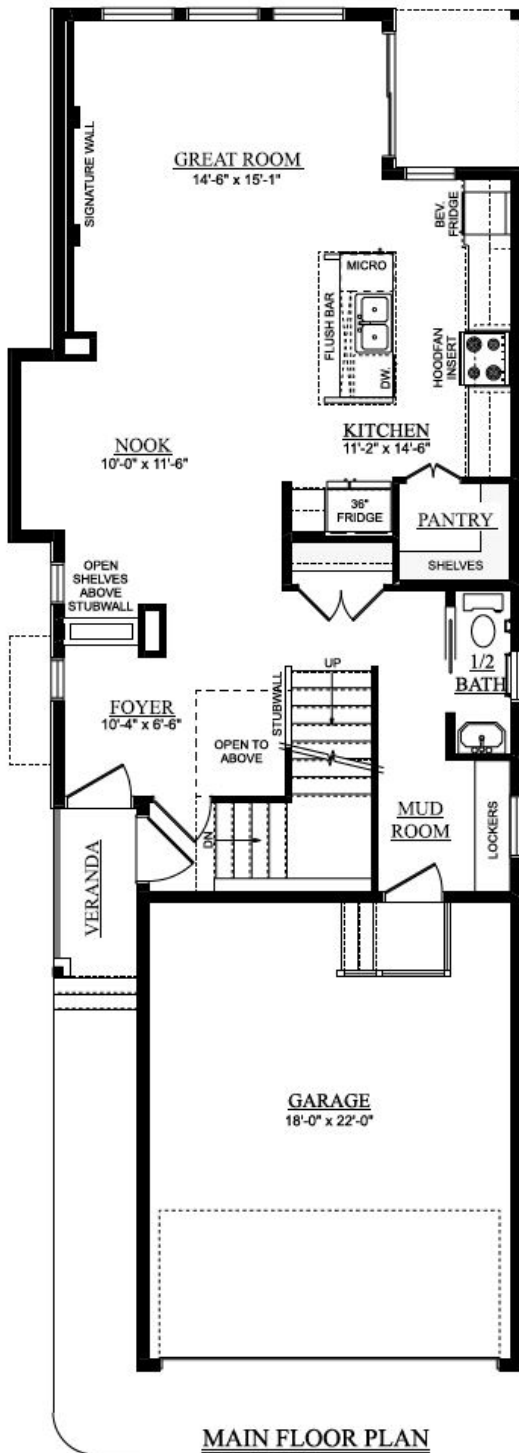
- * Front entry access for future legal basement suite
- * Open concept Main Floor w/ large Great Room
- * Luxurious Kitchen w/ Walk-in Pantry
- * Mudroom with built-in lockers
- * Large ensuite and walk-through-closet
- * Second floor complete w/ laundry and bonus room

It's all yours...indulge.



the SHAYLA

2133 sq. ft.



© This plan is published by Marcson Homes Ltd. Dimensions shown are approximate and subject to change without notice. All rights reserved, including the rights of reproduction in whole or in part, in any form, without permission of Marcson Homes Ltd. Brochure cannot be used for construction. August 14, 2019.



www.marcsonhomes.com

{P} 780.466.8831