



MARCSON
HOMES

CERTIFIED MASTER BUILDER

the BAMBURGH

2089 SQ. FT.



*Craftsman Elevation * ARTIST RENDERING – SUBJECT TO CHANGE **

the BAMBURGH features...

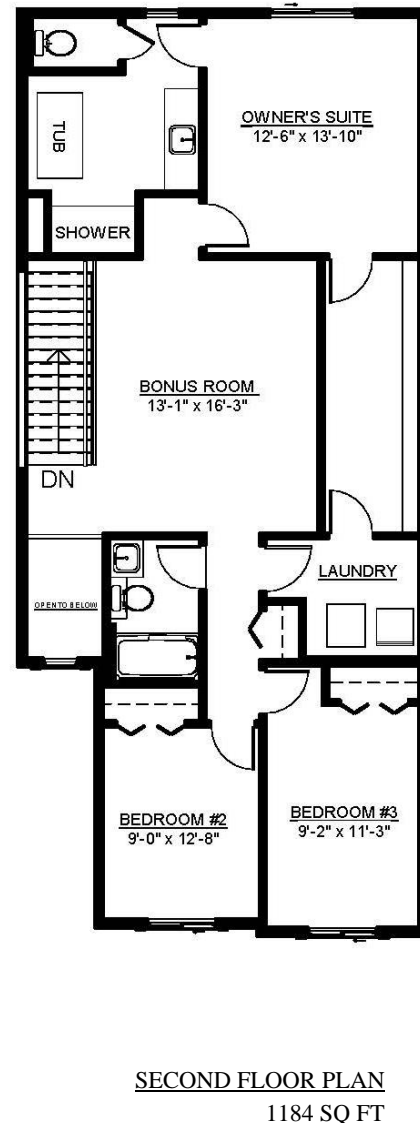
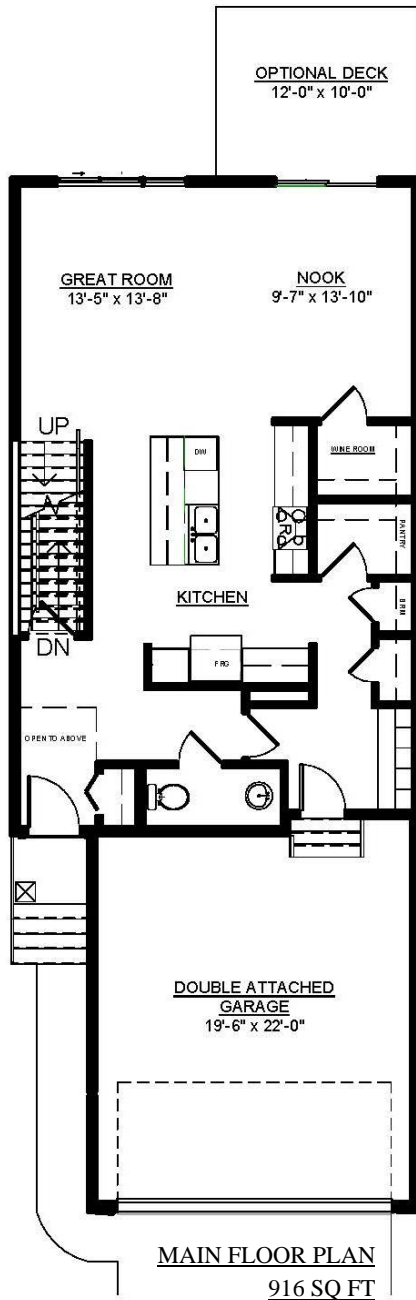
- * Three bedroom home featuring open concept great room, gourmet kitchen and nook
- * Functional mudroom with pantry and wine room or spice kitchen option available
- * Upper floor boasts large bonus room, private master bedroom and spacious closet that connects to the laundry room
- * Ensuite comes with free standing tub and double vanity option available
- * Secondary bedrooms are separated from the master bedroom

It's all yours...indulge.



the BAMBURGH

2089 SQ. FT.



© This plan is published by Marcson Homes Ltd. Dimensions shown are approximate and subject to change without notice. All rights reserved, including the rights of reproduction in whole or in part, in any form, without permission of Marcson Homes Ltd. Brochure cannot be used for construction. Square footage includes both staircases. January 06, 2020.

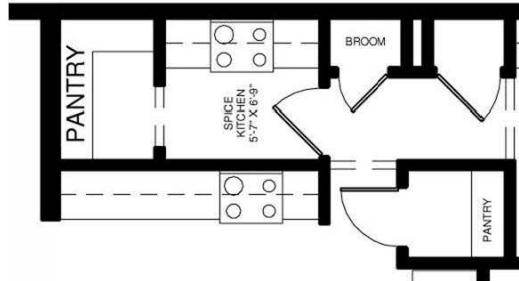


www.marcsonhomes.com

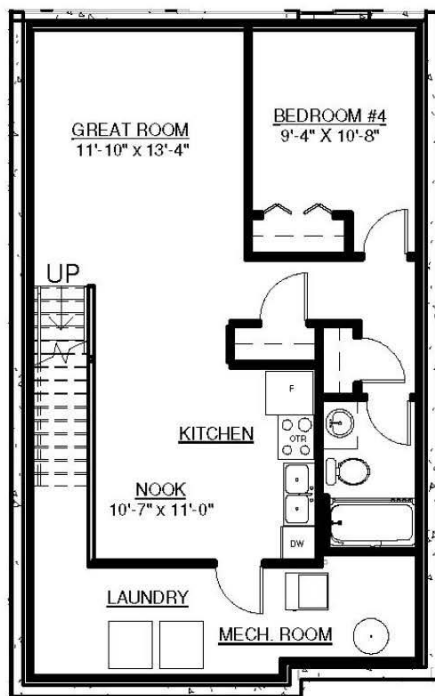
{P} 780.466.8831

the BAMBURGH

Options



Spice Kitchen Option



Legal Suite 644 Sq Ft



Optional Basement Plan 664 Sq Ft

© This plan is published by Marcson Homes Ltd. Dimensions shown are approximate and subject to change without notice. All rights reserved, including the rights of reproduction in whole or in part, in any form, without permission of Marcson Homes Ltd. Brochure cannot be used for construction. Square footage includes both staircases. January 06, 2020.

