



**MARCSON**  
HOMES

**CERTIFIED MASTER BUILDER**

*the* **GLAMIS**  
1898 SQ. FT.

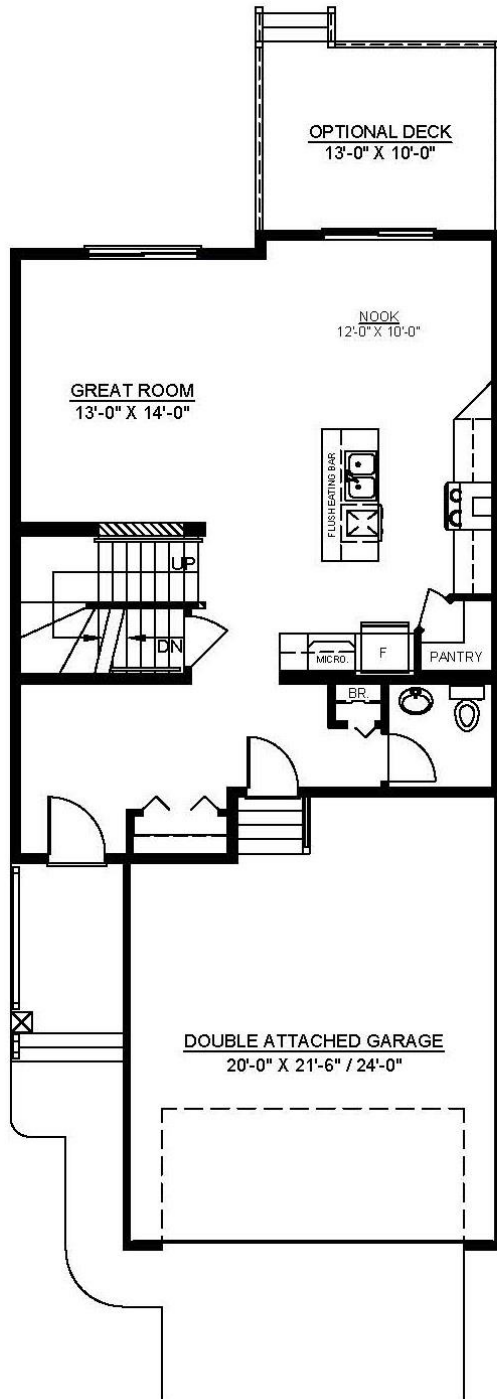


*Heritage Elevation \* ARTIST RENDERING – SUBJECT TO CHANGE \**

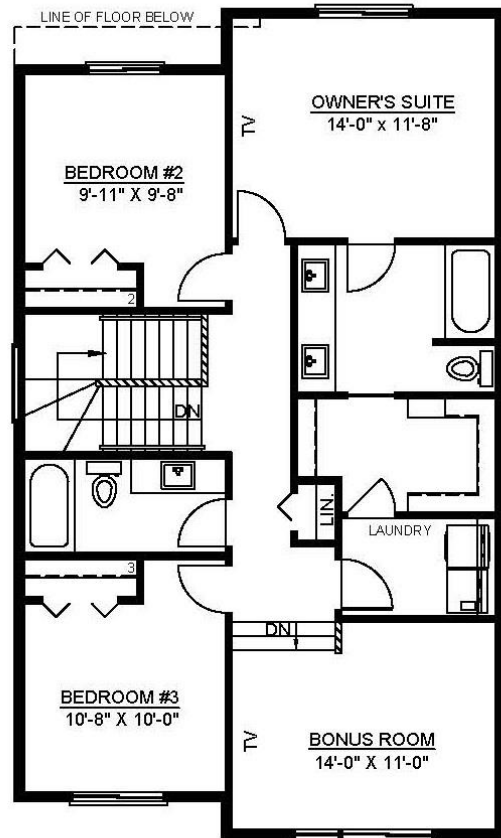


# the GLAMIS

1898 SQ. FT.



**MAIN FLOOR 809 Sq. Ft.**



**SECOND FLOOR 1,089 Sq. Ft.**

© This plan is published by Marcson Homes Ltd. Dimensions shown are approximate and subject to change without notice. All rights reserved, including the rights of reproduction in whole or in part, in any form, without permission of Marcson Homes Ltd. Brochure cannot be used for construction. Square footage includes both staircases. June 17, 2020.

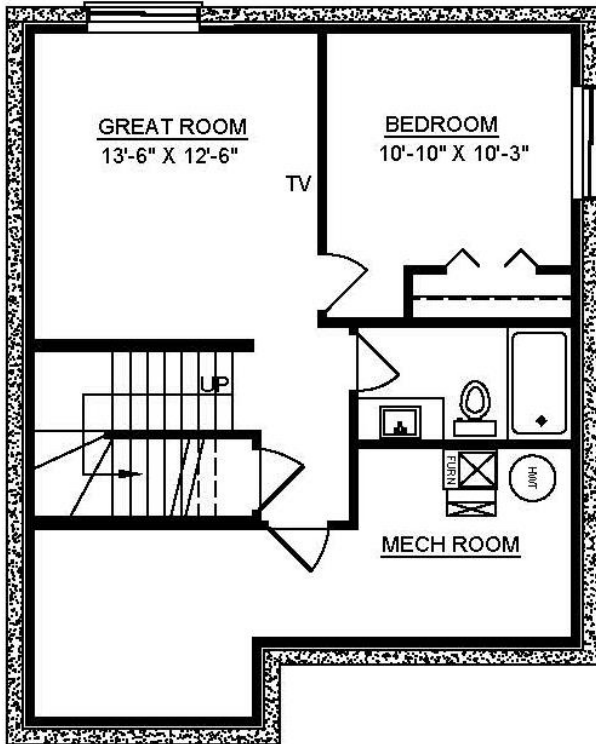


[www.marcsonhomes.com](http://www.marcsonhomes.com)

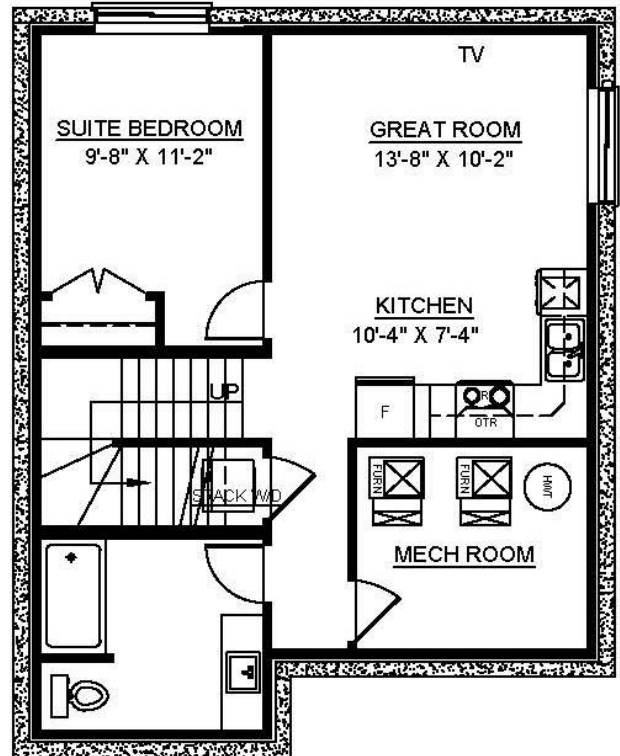
{P} 780.466.8831

# the GLAMIS

## Optional Lower Levels



**OPT. LOWER LEVEL  
DEVELOPMENT**  
**452 Sq. Ft.**



**OPT. LEGAL  
SECONDARY SUITE**  
**635 Sq. Ft.**

© This plan is published by Marcson Homes Ltd. Dimensions shown are approximate and subject to change without notice. All rights reserved, including the rights of reproduction in whole or in part, in any form, without permission of Marcson Homes Ltd. Brochure cannot be used for construction. Square footage includes both staircases. June 17, 2020.



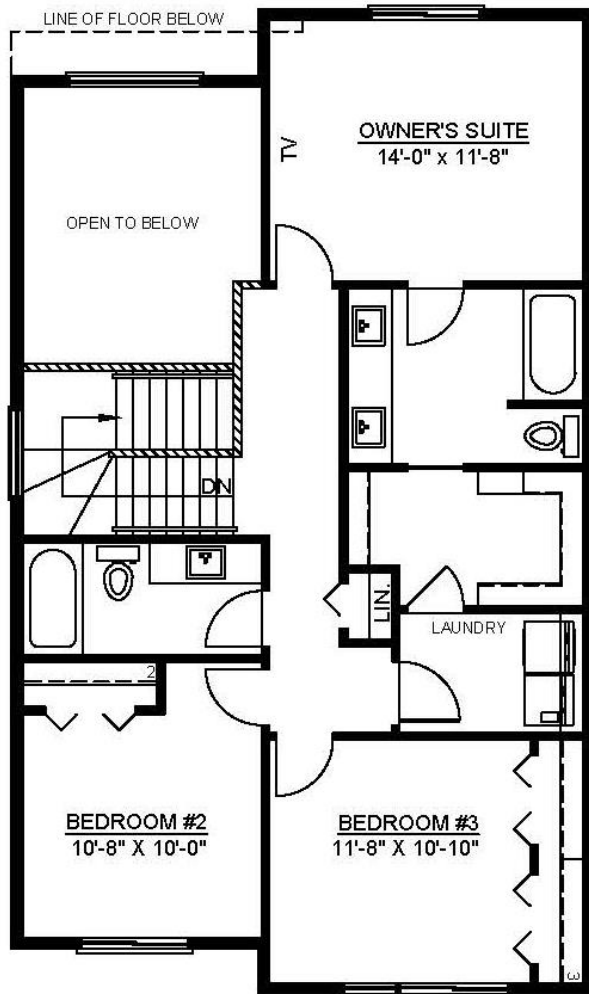
[www.marcsonhomes.com](http://www.marcsonhomes.com)

{P} 780.466.8831

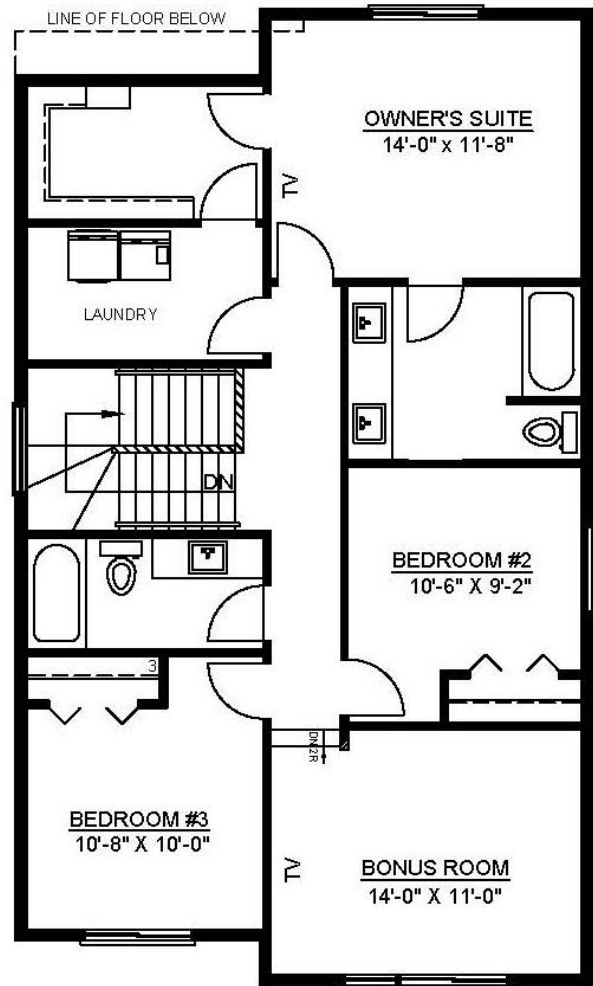
# the GLAMIS

## 1898 SQ. FT.

(1755 SQ. FT. w/ open-to-below option)



**ALT. UPPER FLOOR**  
**(OPEN-TO-BELOW)**  
**946 Sq. Ft.**



**ALT. UPPER FLOOR**  
**1089 Sq. Ft.**

© This plan is published by Marcson Homes Ltd. Dimensions shown are approximate and subject to change without notice. All rights reserved, including the rights of reproduction in whole or in part, in any form, without permission of Marcson Homes Ltd. Brochure cannot be used for construction. Square footage includes both staircases. June 17, 2020.

